

# WHAT IS CGI?

Cognitively Guided Instruction (CGI) is a research base and professional development program. In CGI, children's thinking, rather than just a curriculum, provides the basis for instructional decisions.

The goal for students is to develop rich, informal mathematical thinking and innate problem solving abilities. Teachers learn how mathematical thinking develops and how to guide children toward deeper, more sophisticated levels of understanding.

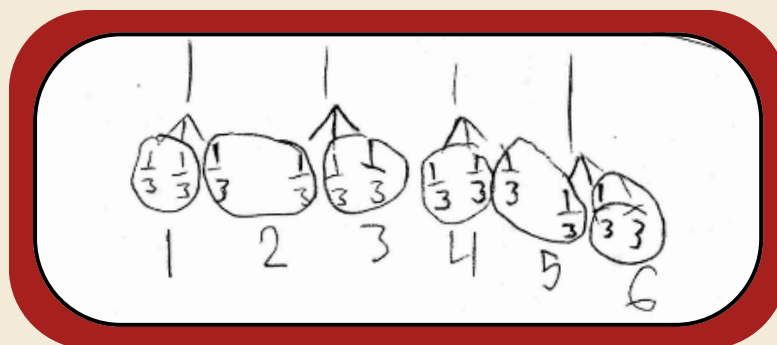
For more understanding of CGI and its impact on children's mathematical development, please review this short video:

[\*\*WATCH NOW\*\*](#)



## WHY JOIN US THIS SUMMER?

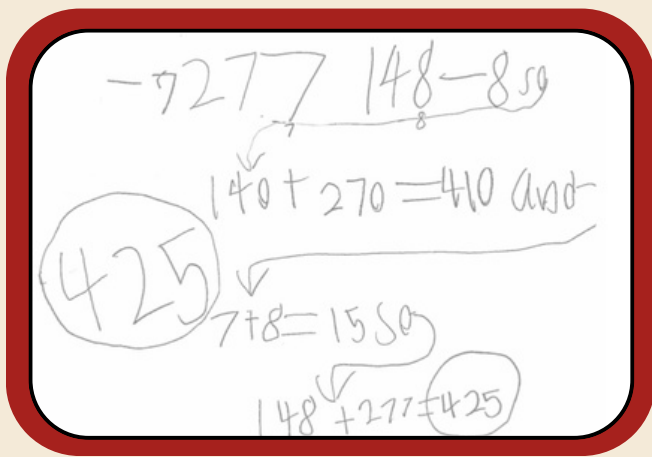
- Learn how to transform your mathematics instruction
- Collaborate with other like-minded educators
- Experience how to develop conceptual thinkers by noticing and building upon students' current understandings
- Become confident in problem types and student strategies in order to best reach all of your students' diverse needs



**READY TO REGISTER?**

[\*\*ENROLL HERE\*\*](#)





## AGENDAS INCLUDE, BUT NOT LIMITED TO:

- Developing a CGI mindset
- Applicable problem types per grade span:
  - Addition/Subtraction
  - Multiplication/Division
  - Equal Share
  - Multiple Groups
- Student strategy progressions
- Questioning to support and extend
- Number sense and reasoning routines

## WORKSHOP LOGISTICS

### Beginning (Year 1) Grades K-2

- July 28-30 + 2 follow up days (1 in fall/ 1 in spring)

### Intermediate (Year 2) Grades K-2

- July 31- Aug 1 + 2 follow up days (1 in fall/ 1 in spring)

### Beginning (Year 1) Grades 3-6

- July 21-23 + 2 follow up days TBD (1 in fall/ 1 in spring)

### Intermediate (Year 2) Grades 3-6

- July 24-25 + 2 follow up days TBD (1 in fall/ 1 in spring)

- All workshops run from 8:30-2:30pm
- Located at SDSU CRMSE office: 6475 Alvarado Rd
- Free parking
- Follow up days to occur at a school site- location TBD
- Coordinating text included
- Cost:
  - **Early Bird Pricing (prior to May 31, 2025):**
    - \$630/5 days for beginning workshop
    - \$495/4 days for intermediate workshop
  - **Pricing after May 31, 2025:**
    - \$695/5 days for beginning workshop
    - \$550/4 days for intermediate workshop

## READY TO REGISTER?

SPACE IS LIMITED!

[ENROLL HERE](#)



## DIRECT ANY QUESTIONS TO:

- Stephanie Sullins: [ssullins@sdsu.edu](mailto:ssullins@sdsu.edu)
- Nick Johnson: [nick.johnson@sdsu.edu](mailto:nick.johnson@sdsu.edu)